

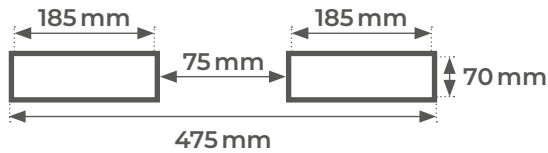
TLBG25



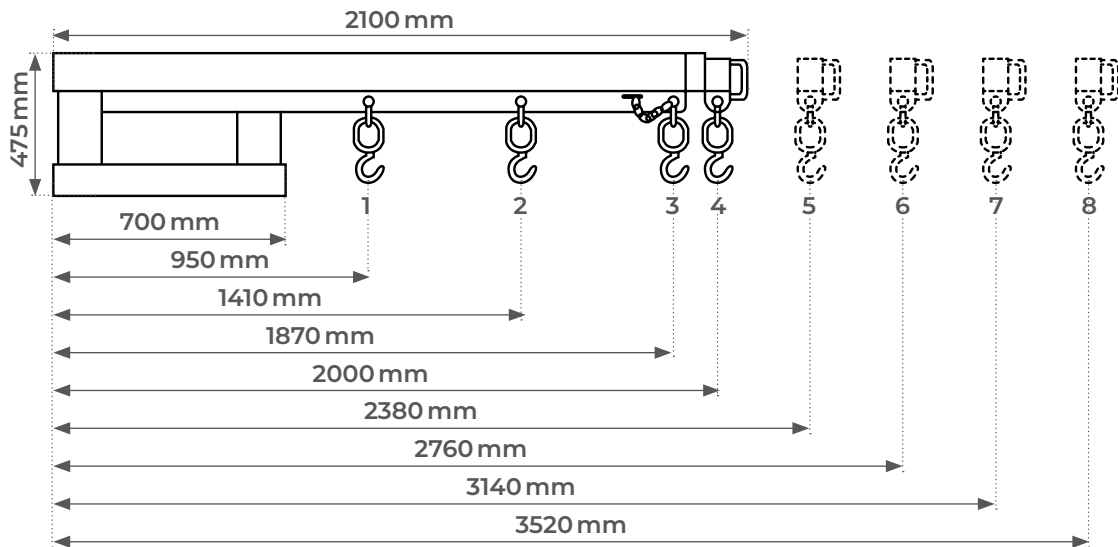
Extendable forklift jib 2500 kg

FEATURES

- Robust steel structure
- Safety chain to secure the device to the forklift
- Shackle and 360° swivel sling hook
- Cold galvanized coating



PLEASE VERIFY ATTACHMENT MATCHES FORKLIFT CAPACITIES



Model		TLBG25							
Position		1	2	3	4	5	6	7	8
Extension	mm	950	1410	1870	2000	2380	2760	3140	3520
Max. load	kg	2500	2500	1900	1650	1250	650	380	240
Weight	kg	134							