

SR513



Polyvalent stacker with reach mast 1300 kg maximum load capacity

DESCRIPTION

Compact structure with an excellent reach mast system ideal for tight spaces.

A powerful AC traction motor and a power-assisted steering system guarantee superior performance and efficiency. Its high-end components make it the best value on the market.

The flip-down platform is the best choice if the stacker has to be used in warehouses and over long distances.

**FASTER AND HIGHER
PERFORMANCE THANKS TO
GERMAN SCHABMÜLLER MOTOR
8 KM/H SPEED
ON STAND-UP RIDER MODEL**

FEATURES

- Straddle legs
- Reach mast
- AC traction motor
- Power steering to reduce operator effort
- High capacity battery for greater autonomy and length of use



Available in option

- Flip-down platform and lateral protection

Tilting forks

Fork tilting ensures easy and safe stacking operations. It also enables operators to slide the forks into the pallets effortlessly.

Reach mast

The SRS13 provides the same stability and flexibility as a standard counter-balance heavy stacker. Its reach mast offers flexibility when working at height tight spaces.

Standard sideshift function

The side-shift function allows operators to easily reposition loads, especially on tight spaces, without moving the stacker.

Battery
Side battery extraction.

Flip-down platform and lateral protection for stand-up rider use available in option



Straddle legs

Easy EUR-pallet entry (1220x800 mm) thanks to the straddle 880 mm inner width.

HIGH-END COMPONENTS

REMA

Multifunctional Rema handle with ergonomic contactless rocker-switches
(German)

AC Schabmüller traction motor
(German)

SCHABMÜLLER

KORDEL

Kordel drive unit
(German)

Reach brakes
(Chinese)

REACH 瑞迪智驱

Wicke

Wicke wheels
(German)

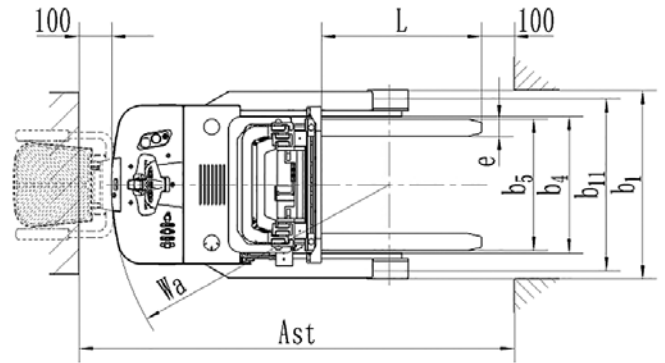
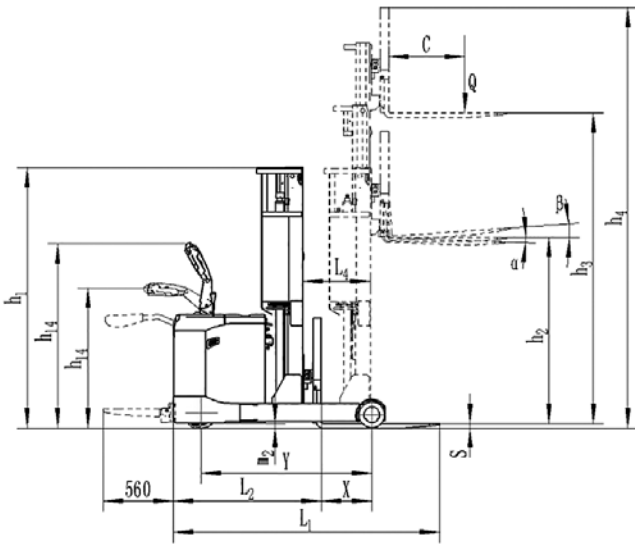
Curtis controllers
(American)

CURTIS

hydr-app

Hydr-app pump
(Italian)

High-end components reduce maintenance costs and guarantee high performance and reliability when performing the most intense operations.



Stockman Reference	Mast	Mast lowered height $h1$ (mm)	Free lift $h2$ (mm)	Standard lift $h3$ (mm)	Mast raised height $h4$ (mm)	Weight (kg)
SRS13						
SRS1336	Triplex FFL	1796	1200	3600	4485	2050
SRS1345		2096	1500	4500	5295	2150
SRS13475		2196	1600	4800	5685	2200

Technical data according to VDI 2198 regulation				
Specifications	1.2	Product Reference ♦ Model		SRS13
	1.3	Power supply		battery
	1.4	Operator type		pedestrian
	1.5	Load capacity	Q(t)	1,3
	1.6	Load center distance	c(mm)	600
	1.8	Distance from carriage to caster axle	x(mm)	415
	1.9	Wheelbase	y(mm)	1350
Weight	2.1	Weight (batteries included)	kg	see table opposite
Wheels	3.1	Wheels		polyurethane (PU)
	3.2	Steering wheel dimensions	Øxw(mm)	Ø250x82
	3.3	Load rollers dimensions	Øxw(mm)	Ø210x85
	3.4	Stabilizing rollers dimensions	Øxw(mm)	Ø124x60
	3.5	Number of front/rear wheels (x=driving wheel)		1x+2/2
	3.6	Front axle wheelbase	b10(mm)	680
	3.7	Load roller wheelbase	b11(mm)	1085
Dimensions	4.1	Tilt of fork carriage forward/backward	°	2/4
	4.2	Mast lowered height	h1(mm)	see table opposite
	4.3	Free lift	h2(mm)	see table opposite
	4.4	Standard lift	h3(mm)	see table opposite
	4.5	Mast raised height	h4(mm)	see table opposite
	4.9	Tiller height in drive position min/max	h14(mm)	1030/1415
	4.15	Fork lowered height	h13(mm)	50
	4.19	Overall length	l1(mm)	2080
	4.20	Front axle to fork face length	l2(mm)	1160
	4.21	Overall width	b1(mm)	1180
	4.22	Fork dimensions	s/e/l(mm)	35/100/920 (1070)
	4.25	Width across forks	b5(mm)	200/760
	4.28	Reach distance	l4(mm)	545
	4.32	Ground clearance	m2(mm)	40
	4.33	Aisle width for 1000x1200 mm pallets crossways	Ast(mm)	2600
4.34	Aisle width for 800x1200 mm pallets lengthways	Ast(mm)	2650	
4.35	Turning radius	Wa(mm)	1570	
Performances	5.1	Travel speed, laden/unladen	km/h	5,5/6 - 8/8
	5.2	Lift speed, laden/unladen	mm/s	110/165
	5.3	Lowering speed, laden/unladen	mm/s	100/110
	5.8	Gradeability laden/unladen	%	5/8
	5.10	Service brake		electromagnetic
Electrical System	6.1	Drive motor rating S2 60 min	kW	2,6
	6.2	Lift motor rating at S3 15 %	kW	3
	6.3	Battery acc. to DIN 43531 / 35 / 36 A, B, C, No		4 PzS
	6.4	Battery voltage, nominal capacity K5	V/Ah	24/400
Additional data	8.1	Type of drive control		AC - speed control
	8.4	Noise level at driver's ear acc. to EN12053	dB(A)	67