

# SEPT15W SC



## Electric pallet truck with $\pm 0,2\%$ weighing precision scale

### FEATURES

- Tolerance:  $\pm 0.2\%$  of its total rated load capacity of 1500 kg (max  $\pm 3$  kg)
- Weighing is made through four fork load cells
- 1 kg calibration weight
- Scale functions: tare, gross / net weight, total weight
- Power supply: battery 6V 4,5 Ah
- Low battery indicator + 3 minutes auto cut-off

### Battery indicator

The internal battery (6V 4,5 Ah) allows about 40 hours of use and/or 4000 weighing operations.

### High contrast display

30 mm LED display.

ABS Soft Touch pad.

Screen can be read from any angle.

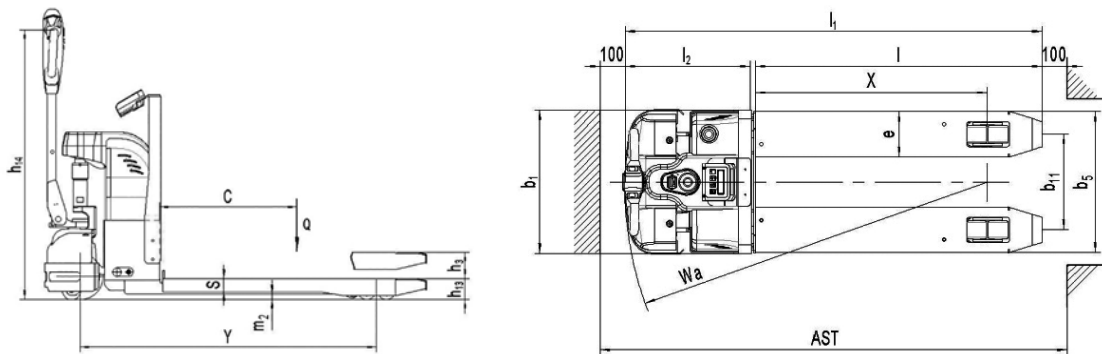
### Water and dust resistant

This is one of the most important characteristics of a reliable weighing scale. IP54 means the pallet truck weighing scale can be used indoors or outdoors and can be cleaned with water (warning: avoid high-pressure cleaning).

### Tare function

The electric pallet truck can add up multiple pallet weights and indicate the total weight per shipment to avoid overloads. When weight is added, the screen displays the new total weight, and the number of pallets weighed. This function allows the operator to verify that he did not forget to weigh any pallets or weigh the same pallet twice.





### Technical data according to VDI 2198 regulation

|                   |      |   |                            |                             |
|-------------------|------|---|----------------------------|-----------------------------|
| Specifications    | 1.2  | Product Reference ♦ Model                       |                            | <b>SEPT15WSC</b>            |
|                   | 1.3  | Power supply                                    |                            | battery                     |
|                   | 1.4  | Operator type                                   |                            | pedestrian                  |
|                   | 1.5  | Rated load capacity                             | $Q(t)$                     | 1,5                         |
|                   | 1.6  | Load center                                     | $c(mm)$                    | 600                         |
|                   | 1.8  | Distance from carriage to caster axle           | $x(mm)$                    | 946                         |
|                   | 1.9  | Wheelbase                                       | $y(mm)$                    | 1293                        |
| Weight            | 2.1  | Weight (batteries included)                     | $kg$                       | 235                         |
|                   | 2.2  | Axle load laden front/rear                      | $kg$                       | 515/1220                    |
|                   | 2.3  | Axle load unladen front/rear                    | $kg$                       | 170/65                      |
| Wheels            | 3.1  | Wheels  |                            | polyurethane (PU)           |
|                   | 3.2  | Steering wheel dimensions                       | $\varnothing \times w(mm)$ | $\varnothing 200 \times 70$ |
|                   | 3.3  | Load rollers dimensions                         | $\varnothing \times w(mm)$ | $\varnothing 80 \times 70$  |
|                   | 3.4  | Stabilizing rollers dimensions                  | $\varnothing \times w(mm)$ | $\varnothing 80 \times 30$  |
|                   | 3.5  | Number of front/rear wheels (x = driving wheel) |                            | 1x+2/4                      |
|                   | 3.6  | Front axle wheelbase                            | $b_{10}(mm)$               | 410                         |
|                   | 3.7  | Load roller wheelbase                           | $b_{11}(mm)$               | 380                         |
| Dimensions        | 4.4  | Standard lift                                   | $h_3(mm)$                  | 115                         |
|                   | 4.9  | Tiller height in drive position min/max         | $h_{14}(mm)$               | 800/1170                    |
|                   | 4.15 | Fork lowered height                             | $h_{13}(mm)$               | 90                          |
|                   | 4.19 | Overall length                                  | $l_1(mm)$                  | 1675                        |
|                   | 4.20 | Front axle to fork face length                  | $l_2(mm)$                  | 510                         |
|                   | 4.21 | Overall width                                   | $b_1(mm)$                  | 574                         |
|                   | 4.22 | Fork dimensions                                 | $s/e/l(mm)$                | 56/180/1143                 |
|                   | 4.25 | Width across forks                              | $b_5(mm)$                  | 560                         |
|                   | 4.32 | Ground clearance                                | $m_2(mm)$                  | 23                          |
|                   | 4.34 | Aisle width for 800x1200 mm pallets             | $AST(mm)$                  | 1950                        |
| Performances      | 4.35 | Turning radius                                  | $Wa(mm)$                   | 1470                        |
|                   | 5.1  | Travel speed, laden/unladen                     | $km/h$                     | 4,2/4,6                     |
|                   | 5.2  | Lift speed, laden/unladen                       | $m/s$                      | 30/53                       |
|                   | 5.3  | Lowering speed, laden/unladen                   | $m/s$                      | 36/49                       |
|                   | 5.8  | Gradeability laden/unladen                      | %                          | 4/10                        |
| Electrical system | 5.10 | Service brake                                   |                            | electromagnetic             |
|                   | 6.1  | Drive motor rating S2 60 min                    | $kW$                       | 0,45                        |
|                   | 6.2  | Lift motor rating at S3 15 %                    | $kW$                       | 0,8                         |
|                   | 6.3  | Battery acc. to DIN 43531 / 35 / 36 A, B, C, No |                            | no                          |
|                   | 6.4  | Battery voltage, nominal capacity K5            | $V/Ah$                     | 2x12 / 64                   |
|                   | 6.5  | Battery weight                                  | $kg$                       | 2x24                        |
| Additional data   | 6.6  | Energy consumption acc. to VDI cycle            | $kWh/h$                    | 0,39                        |
|                   | 8.1  | Type of drive control                           |                            | DC - speed control          |
|                   | 8.4  | Noise level at driver's ear acc. to EN12053     | $dB(A)$                    | <69                         |