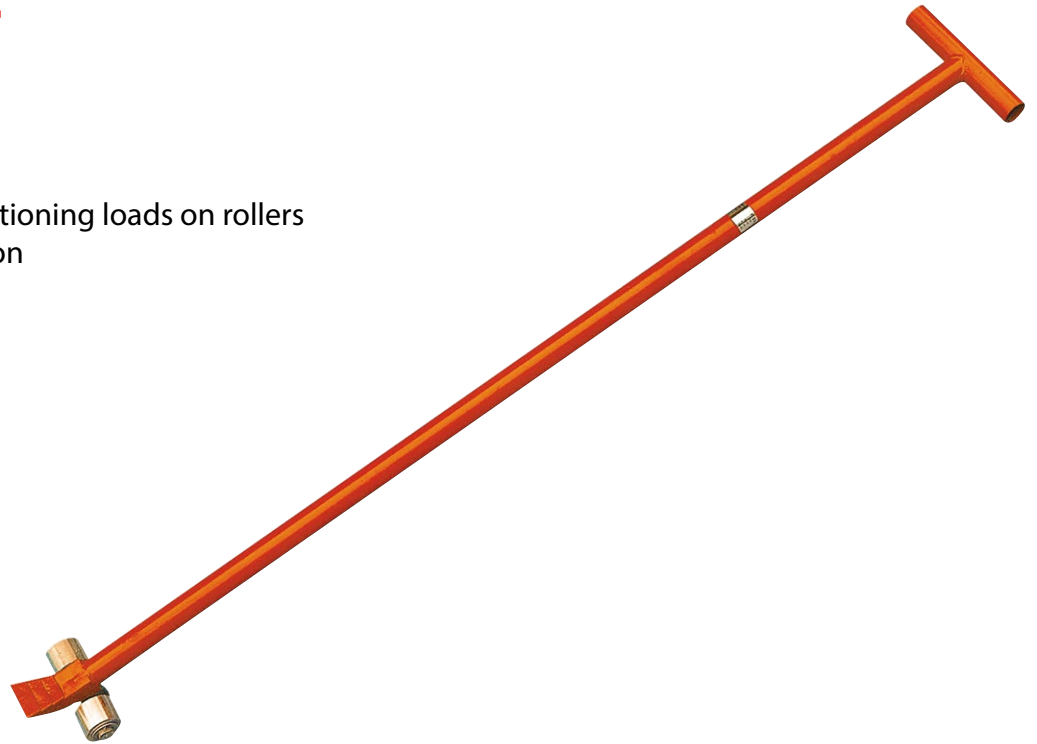


RC15

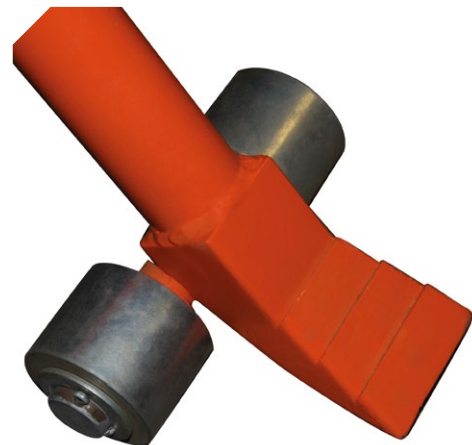
Roller crowbar 1500 kg

FEATURES

- Ideal for lifting and positioning loads on rollers
- Forged steel construction
- Load capacity: 1500 kg



1.5
TON



Model		RC15
Load capacity	kg	1500
Length	mm	2000
Steel rollers	mm	Ø70
Wheels	mm	Ø55
Weight	kg	19