



# PSE10M

## Single mast electric walkie stacker 1000 kg maximum load capacity

### DESCRIPTION

PSE10M is a budget electric walkie stacker with a rated load capacity of 1000 kg and a lift height between 800 and 2000 mm. Its single mast provides perfect load visibility. It is the best value solution for light stacking tasks.

### FEATURES

- Built-in charger provides great battery autonomy
- Low battery indicator with auto cut-off function for an extended lifetime
- A lateral handle and four points of contact enhance stability and visibility
- Equipped with Amer motor and Curtis controllers



CURTIS

**PSE10M2000**

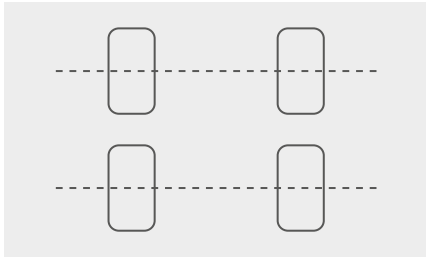
**PSE10M800**





### Robust and ergonomic handle

Its robust and ergonomic handle, steel crankcase, and plastic coating ensure reliability and comfort.



### Stability

Four casters and a lateral handle provide excellent visibility, maneuverability, and greater stability.



### Reliable components

A low battery indicator with an auto cut-off function ensures long-lasting service life.



### Robust and profiled mast

Its robust and profiled mast guarantees perfect stability, precision, and durability.

### Easy to maneuver

A convenient single mast guarantees enhanced visibility..



### Italian traction motor

The Italian Amer traction motor provides power, better energy consumption, less noise, and low maintenance costs.



### Powerful battery

Powerful maintenance-free battery: 2x 12V 85 Ah VRLA-AGM

Available in option: 2x 12V 105 Ah.

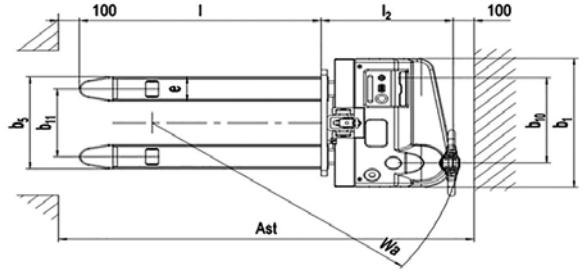
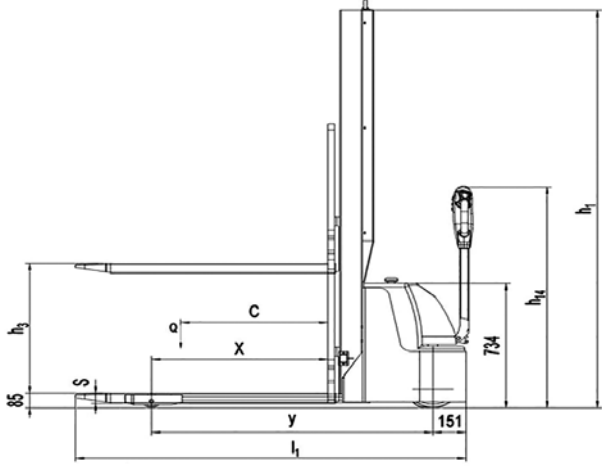
### Standard compliance

In compliance with European standards including ISO 13849.

### Available in option

- Load backrest
- Auto-leveling photo-sensor

Photos and dimensions are not contractual. The manufacturer reserves the right to make any modification without notice, in order to improve the performance of the equipment.



Technical data according to VDI 2198 regulation						
Specifications	1.2	Product Reference ♦ Model		PSE10M800	PSE10M1600	PSE10M2000
	1.3	Power supply		battery	battery	battery
	1.4	Operator type		pedestrian		
	1.5	Load Capacity	Q(t)	1	1	1
	1.6	Load center distance	c(mm)	600	600	600
	1.8	Distance from carriage to caster axle	x(mm)	800	800	800
	1.9	Wheelbase	y(mm)	1281	1281	1281
Weight	2.1	Weight (batteries included)	kg	439	454	462
	2.2	Axle load laden front/rear	kg	477/957	477/957	477/957
	2.3	Axle load unladen front/rear	kg	335/119	335/119	335/119
Wheels	3.1	Wheels		polyurethane (PU)		
	3.2	Steering wheel dimensions	Øxw(mm)	Ø220x70	Ø220x70	Ø220x70
	3.3	Load rollers dimensions	Øxw(mm)	Ø80x93	Ø80x93	Ø80x93
	3.4	Stabilizing rollers dimensions	Øxw(mm)	Ø124x60	Ø124x60	Ø124x60
	3.5	Number of front/rear wheels (x=driving wheel)		1x+1/2	1x+1/2	1x+1/2
	3.6	Front axle wheelbase	b10(mm)	529	529	529
	3.7	Load roller wheelbase	b11(mm)	390	390	390
Dimensions	4.2	Mast lowered height	h1(mm)	1500	1949	2349
	4.4	Standard lift	h3(mm)	715	1515	1915
	4.9	Tiller height in drive position min/max	h14(mm)	785/1300	785/1300	785/1300
	4.15	Fork lowered height	h13(mm)	85	85	85
	4.19	Overall length	l1(mm)	1778	1778	1778
	4.20	Front axle to fork face length	l2(mm)	628	628	628
	4.21	Overall width	b1(mm)	800	800	800
	4.22	Fork dimensions	s/e/l(mm)	60/150/1150	60/150/1150	60/150/1150
	4.25	Width across forks	b5(mm)	540	540	540
	4.32	Ground clearance	m2(mm)	35	35	35
	4.33	Aisle width for 1000x1200 mm pallets crossways	Ast(mm)	2316	2316	2316
	4.34	Aisle width for 800x1200 mm pallets lengthways	Ast(mm)	2248	2248	2248
4.35	Turning radius	Wa(mm)	1485	1485	1485	
Performances	5.1	Travel speed, laden/unladen	km/h	4,3/4,5	4,3/4,5	4,3/4,5
	5.2	Lift speed, laden/unladen	mm/s	110/160	110/160	110/160
	5.3	Lowering speed, laden/unladen	mm/s	110/130	110/130	110/130
	5.8	Gradeability laden/unladen	%	5/10	5/10	5/10
	5.10	Service brake		electromagnetic		
Electrical system	6.1	Drive motor rating S2 60 min	kW	0,45	0,45	0,45
	6.2	Lift motor rating at S3 15 %	kW	2,2	2,2	2,2
	6.3	Battery acc. to DIN 43531 / 35 / 36 A, B, C, No		no	no	no
	6.4	Battery voltage, nominal capacity K5	V/Ah	2x12/85	2x12/85	2x12/85
	6.5	Battery weight	kg	2x55	2x55	2x55
	6.6	Energy consumption acc. to VDI cycle	kWh/h	0,73	0,73	0,73
Additional data	8.1	Type of drive control		DC - speed control		
	8.4	Noise level at driver's ear acc. to EN12053	dB(A)	<69	<69	<69

# RESIDUAL CAPACITY

SX ♦ Single

DX ♦ Duplex

TX ♦ Triplex

SL ♦ Straddle legs

FFL ♦ Full free lift

LI ♦ Initial lift

LP ♦ Proportional lift

DA ♦ Electrical power steering

SC ♦ Built-in weighing scale

CP ♦ Pin code

## PSE10M ♦ PP. 88 TO 91

PSE10M800  
PSE10M1600  
PSE10M2000



PSE10M800				PSE10M1600				PSE10M2000			
h3 (mm)	Q (kg)			h3 (mm)	Q (kg)			h3 (mm)	Q (kg)		
	800	1000	800			1000	800			2000	1000
cdg (mm) 600 700				cdg (mm) 600 700				cdg (mm) 600 700			