

OMNIA2TR

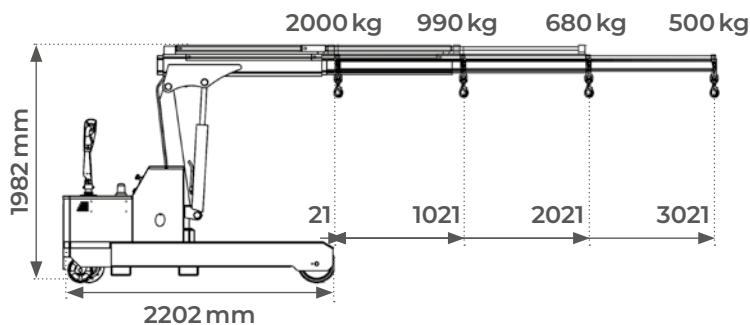


Motorized counterbalance shop crane 2000 kg up to 3 m extension

FEATURES

- Fully electric: lifting, extension, traveling
- Excellent driving quality, can travel with the load
- Exceptional turning radius, very good maneuverability
- Automatic overload safety device
- Hook height of more than 5,5 m from the ground
- Radio control with proportional buttons
- Waterproof AGM battery and integrated charger
- Arm extension locking system
- Complies with all safety standards, emergency stop, differential, buzzer, shut-off valve, etc.

**ELECTRIC LIFT
AND EXTENSION,
MOTORIZED
TRAVELING**



EXCLUSIVE PARTNER



Model		OMNIA2TR
Folded boom capacity	kg	2000
Extended boom max. capacity	kg	500
Overall dimensions (L x W x H)	mm	2202 x 1116 x 1714
Min./max. boom length	D	900
Extension	E	21/3021
Traction motor	Kw	1,2
Lift motor	Kw	2,2
AGM battery	V/A	2 x 12/2 x 260
Charger	V/A	24/30
Weight	kg	1900

