

# HT300/LUK

Graphite  
SERIES



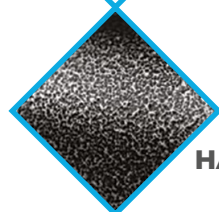
## Steel hand truck with fixed nose plate 300 kg

### FEATURES

- Light, maneuverable and robust
- Curved frame ideal for cylinders transport
- Robust design with reinforced frame
- Easy-grip ergonomic handle
- Premium wheels equipped with ball bearings provide excellent rolling performance
- Large-diameter wheels glide over curbs and ensure a smooth rolling



**DOUBLE SEALED BALL BEARINGS**



**SCRATCH-RESISTANT HAMMER PAINT**



**REINFORCED WHEEL LOCK**

**4  
MODELS  
AVAILABLE**



**RG**

High-quality pneumatic wheel with high density PP body



**RSB**

High-quality non-marking silent blue elastic rubber wheel



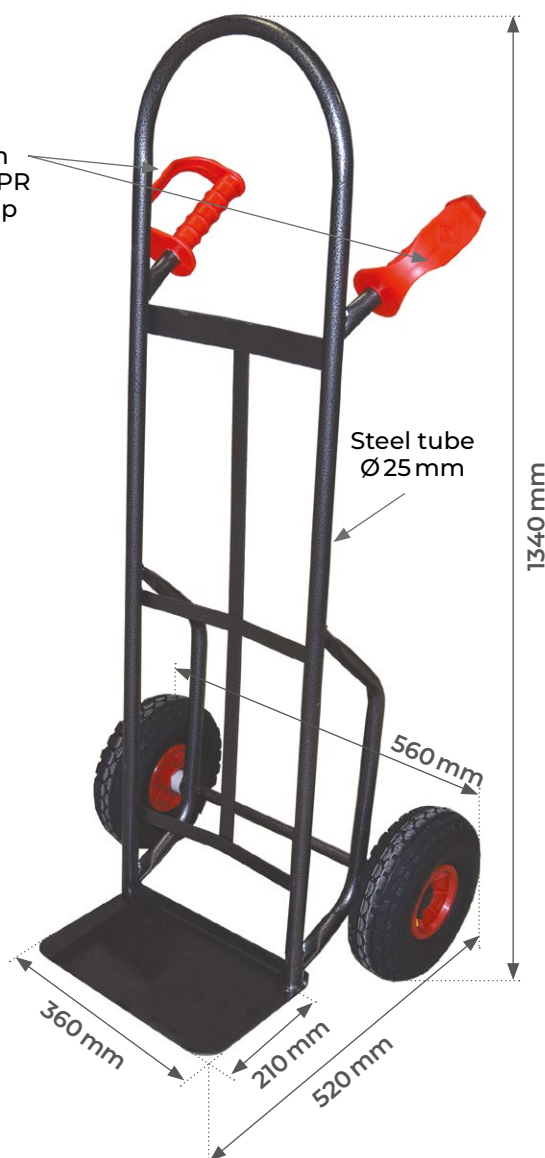
**RSN**

High-quality silent black elastic rubber wheel



**RINC**

High-quality puncture-proof non-marking silent foam wheel



Model		HT300/LUK-RG	HT300/LUK-RSB	HT300/LUK-RSN	HT300/LUK-RINC
Load capacity	kg	300	300	300	300
Overall length	mm	560	560	560	560
Overall depth	mm	520	520	520	520
Overall height	mm	1340	1340	1340	1340
Nose plate type		fixed	fixed	fixed	fixed
Nose plate width	mm	360	360	360	360
Nose plate depth	mm	210	210	210	210
Type of wheel tires		pneumatic	non-marking silent blue elastic rubber	silent black elastic rubber	non-marking silent puncture-proof foam
Type of wheel hub		high density PP	polyamide 6	polyamide 6	high density PP
Type of bearings		double sealed ball bearing	double sealed ball bearing	double sealed ball bearing	double sealed ball bearing
Wheels	mm	Ø 260	Ø 250	Ø 250	Ø 260
Weight	kg	15	15	15	15