

# HT300/ELA

Graphite  
SERIES



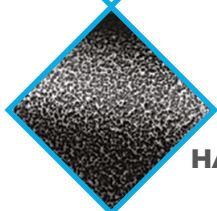
## Oversized load steel hand truck 300 kg

### FEATURES

- Light, maneuverable and robust
- Ideal for oversize loads transport
- Easy-grip ergonomic handle
- Premium wheels equipped with ball bearings provide excellent rolling performance
- Large-diameter wheels glide over curbs and ensure a smooth rolling



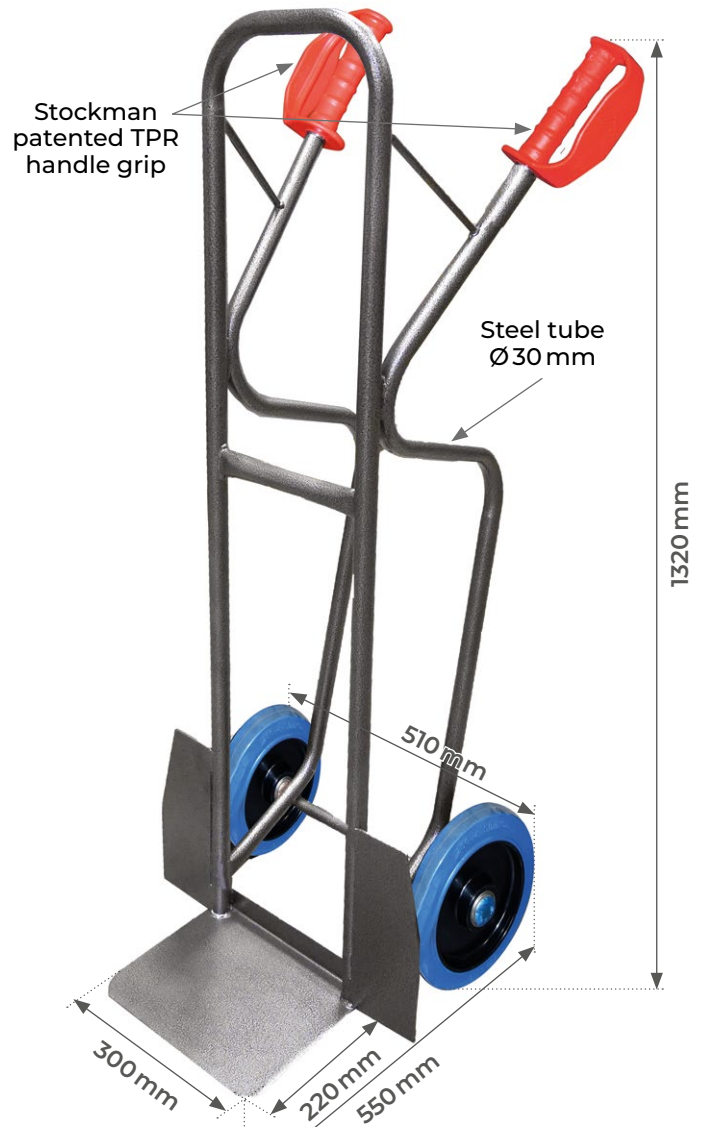
**DOUBLE SEALED BALL BEARINGS**



**SCRATCH-RESISTANT HAMMER PAINT**



**REINFORCED WHEEL LOCK**



**4 MODELS AVAILABLE**



**RG**

High-quality pneumatic wheel with high density PP body



**RSB**

High-quality non-marking silent blue elastic rubber wheel



**RSN**

High-quality silent black elastic rubber wheel



**RINC**

High-quality puncture-proof non-marking silent foam wheel

Model		HT300/ELA-RG	HT300/ELA-RSB	HT300/ELA-RSN	HT300/ELA-RINC
Load capacity	kg	300	300	300	300
Overall length	mm	510	510	510	510
Overall depth	mm	550	550	550	550
Overall height	mm	1320	1320	1320	1320
Nose plate type		fixed	fixed	fixed	fixed
Nose plate width	mm	300	300	300	300
Nose plate depth	mm	220	220	220	220
Type of wheel tires		pneumatic	non-marking silent blue elastic rubber	silent black elastic rubber	non-marking silent puncture-proof foam
Type of wheel hub		high density PP	polyamide 6	polyamide 6	high density PP
Type of bearings		double sealed ball bearing	double sealed ball bearing	double sealed ball bearing	double sealed ball bearing
Wheels	mm	Ø260	Ø250	Ø250	Ø260
Weight	kg	15	15	15	15