



HL540M

Manual scissor lift pallet truck 1000 kg maximum load capacity

FEATURES

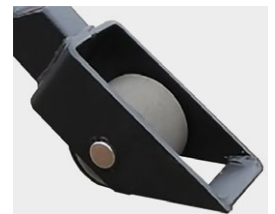
- Two rear stabilizing bars prevent the unit from moving when lift height reaches 400 mm for excellent stability
- Handy, robust and effective
- The monocylinder hydraulic pump offers great operating flexibility, easier lift and long durability
- The high frame provides better user protection
- Minimum pumping effort
- German pump seals
- Lowering pedal
- The cylinder head is connected to a ball bearing for maximum flexibility



Reinforced chassis



Anti-crush function



Wide caster stabilizers



Lowering foot pedal

Specifications	Product Reference ♦ Model		HL540M
Capacity	Capacity	kg	1000
	Load centre distance	mm	500
Weight	Weight	kg	110
Wheels	Polyurethane rollers	mm	Ø80x45
	Rubber steering wheel	mm	Ø200
Dimensions	Fork raised height	mm	800
	Fork lowered height	mm	85
	Fork length	mm	1165/800
	Width across forks	mm	540
Performances	Pump strokes		22

Photos and dimensions are not contractual. The manufacturer reserves the right to make any modification without notice, in order to improve the performance of the equipment.