

GE

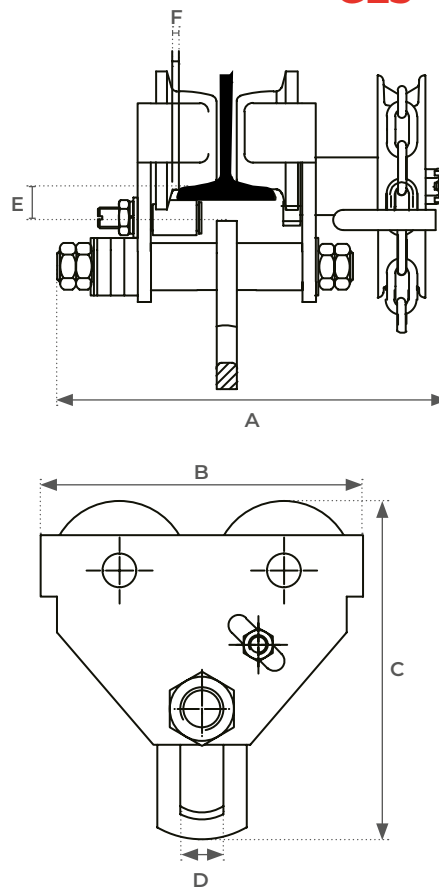
Manual hoist trolley 500 to 10000 kg

FEATURES

- Load capacity: from 500 to 10000 kg
- All steel construction
- Two forged steel swivel sling hooks
- Corrosion resistant load chain
- Highly effective braking system even with light loads
- Chain travel mechanism
- Operational chain length: 3 m



GE5



Model		GE5	GE10	GE20	GE30	GE50	GE100
Load capacity	kg	500	1000	2000	3000	5000	10000
Tested up to	kg	625	1250	2500	3750	6250	12500
Setting range	mm	64 - 140	64 - 140	76 - 165	76 - 203	88 - 203	125 - 203
Min. bending radius	m	0,6	0,8	1,1	1,4	1	1,3
A (min.)	mm	308,5	328,5	361,5	428,5	434	487,5
B	mm	212	255	302	344	378	455
C	mm	198,5	231,5	278	338	393	490
D	mm	24	30,5	36	45	60	82
E	mm	28	25	27	32	34	36,5
F	mm	≈3	≈3	≈3	≈3	≈5	≈5
Weight	kg	11,6	17	25,5	39	57	93