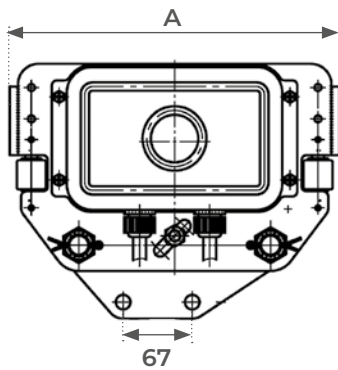


ET

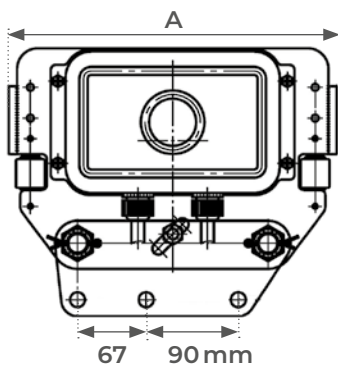
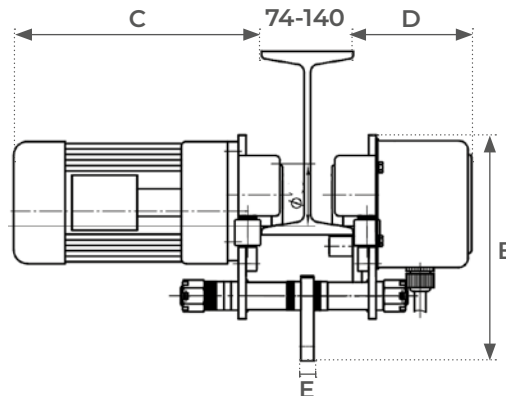
Motorized hoist trolley 1000 and 2000 kg

FEATURES

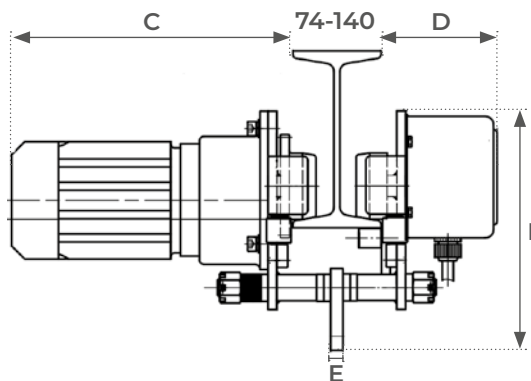
- Attached to an electric hoist by the top hook
- Adaptable flanges fit a wide range of IPN, IPE, HEA, HEB beams (74 to 140 mm)
- Ready to plug in
- 3-phase 380V (single-phase 220V available on request)
- Two travel speeds



ET10



ET20



**COMPATIBLE ONLY WITH:
EW502, EW1001, EH502,
EH1001 AND EH2002 HOISTS**

IN OPTION

Remote control cable
for hoist trolley usage

Model		ET10	ET20
Load capacity	kg	1000	2000
2 speeds	m/min	20/6,7	20/6,7
Power	kw	0,2/0,67	0,4/0,13
Flange spacing	mm	74 - 140	74 - 140
A	mm	320	320
B	mm	246	271
C	mm	270	319
D	mm	130	130
E	mm	14	14
Weight	kg	33	40