

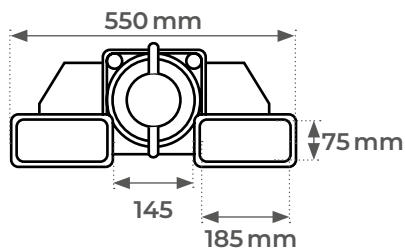
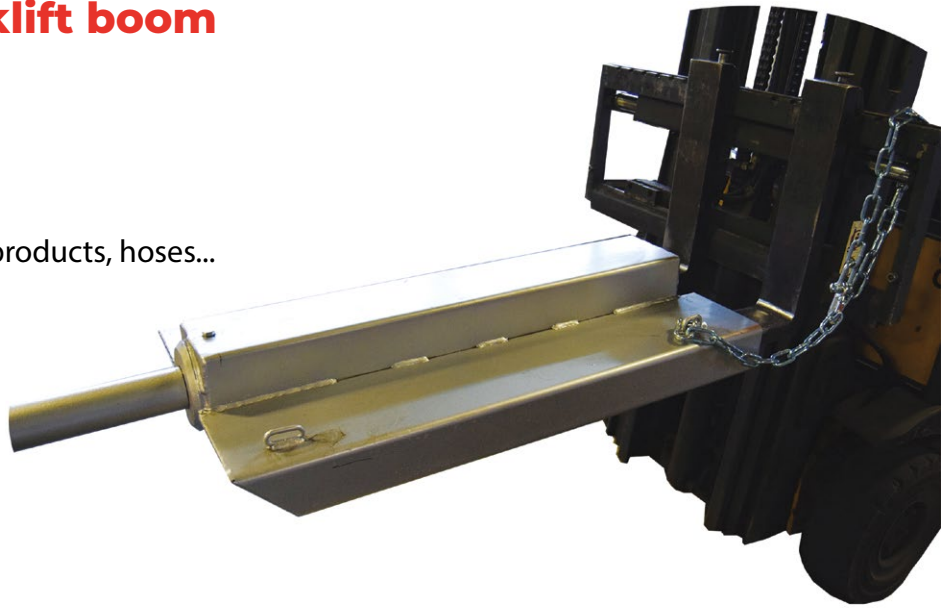
EPG500F



Fork mounted forklift boom 510 kg

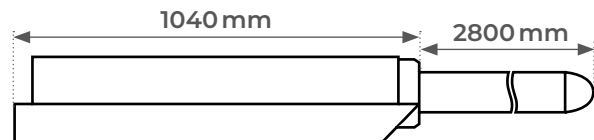
FEATURES

- Fork mount pole
- Ideal for carpet rolls, printing products, hoses...
- Robust steel construction
- Load capacity of 510 kg
- Safety chain to secure the device to the forklift
- Cold galvanized coating

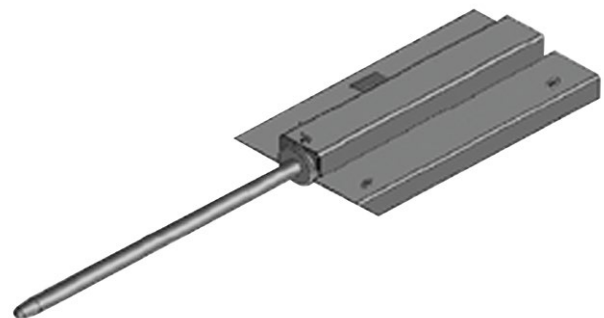


IN OPTION

Boom shortening
CONTACT US



**PLEASE VERIFY
ATTACHMENT MATCHES
FORKLIFT CAPACITIES**



Model		EPG500F
Load capacity	kg	510
Class		II
Spur diameter	mm	Ø 70
Overall width	mm	3840
Fork sleeves	mm	185 x 75
Weight	kg	165