

DF50

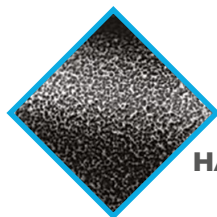
Graphite
SERIES



Steel drum trolley with tilting assistance 500 kg

FEATURES

- Storage, transport or filling of barrels and plastic or metal drums
- Tilting assistance mechanism reduces effort by 60%
- Smooth handling allows one-person operation
- Sets down loads gradually
- Anti-scratch hammered paint
- Allows palletizing and depalletizing
- Includes a strap



SCRATCH-RESISTANT
HAMMER PAINT

TILTING ASSISTANCE
MECHANISM



Model		DF50
Load capacity	kg	500
Dimensions (LxWxH)	mm	583x673x1610
Front wheels	mm	Ø 250
Rear wheels	mm	Ø 150
Weight	kg	30